

Metso:Outotec

# Sala VS Series Vertical Sump Pumps

Industry benchmark in  
efficient overflow recovery



## Sala VS Series Vertical Sump Pumps

# Industry benchmark in efficient overflow recovery

Metso Outotec Sala VS series vertical sump pumps are the strongest, high capacity and leading pumps preferred by the heaviest industries throughout the world. Globally used for efficient overflow recovery and its return to the process, our vertical sump pumps eliminate the need for mechanical recovery.

Developed from the old SALA sump pump, VASA G model, the Metso Outotec type VS vertical sump is the most reliable sump pump available on the market.

### Simple installation

With small sump pumps is it possible to hang the pump in the sump by the lifting bracket provided. Larger units are normally bolted to a permanent base plate. Pump bearings are in a housing above the base plate for accessibility and protection.

All pumps can run dry intermittently. Metallic pump parts can run dry for an unlimited period. Special designs giving extended length, with the bearings below the base plate, are available on request.

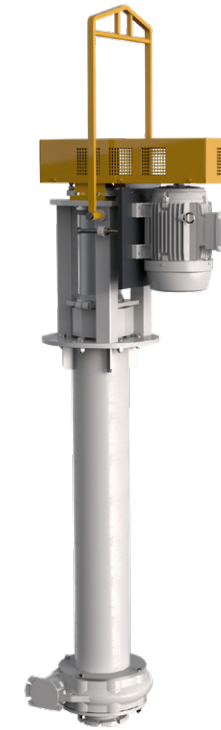
### Robust cantilever design

The heavy-duty pump shaft is of cantilever design, hanging below the bearing housing. There are no submerged bearings, stuffing box or shaft seals. This design ensures minimum maintenance and eliminates the need for water flushing.

The pump shaft is mounted in grease lubricated roller bearings. Impeller clearance is maintained by external axial adjustment of the shaft/bearing assembly. Bearings have double seal protection against contamination.



Known for robustness and ease of maintenance, these pumps are designed specifically for abrasive slurries.



### High-quality parts

Standard pumps are supplied with parts in wear resistant natural rubber or high chrome white iron alloy, with a nominal hardness of 600 BHN.

Other wear part materials available include elastomers in synthetic rubbers and polyurethane and metals such as 316 stainless steel and CD4MCu. Parts in different materials are fully interchangeable and can be combined for optimum life.

### Wet end

The "wet end" parts have large material sections for extra-long wear life and are designed for the toughest of applications. Single volute and generous solids passage through the pump ensure safe and clogless operation. The "wet end" assembly is suspended from a tubular column below the bearing housing.



### Drive

Pumps can be supplied with a V-belt drive, motor, and drive guard. The motor is mounted vertically on an adjustable motor plate fitted beside the bearing housing.

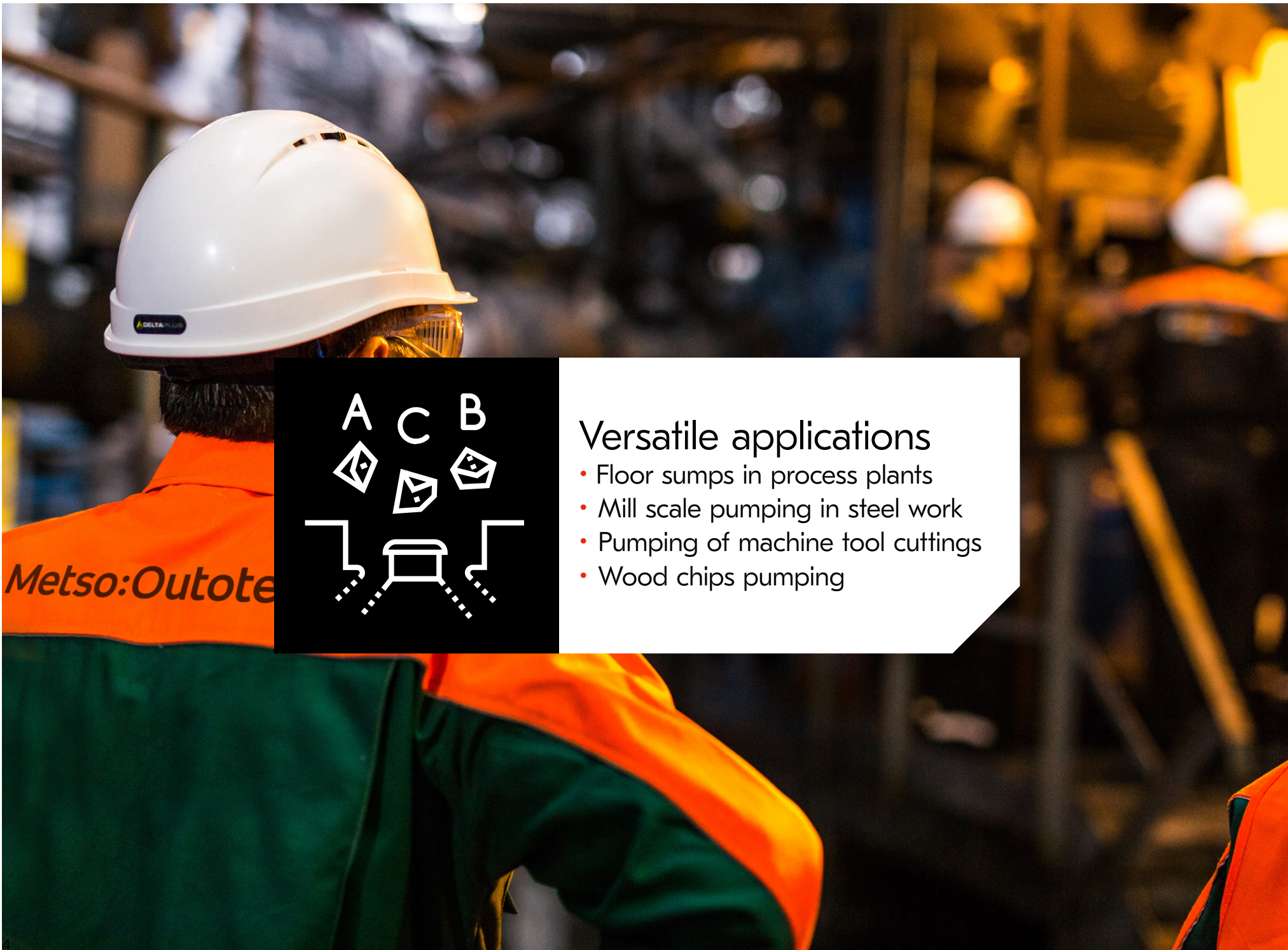
### Motor size

Motor size and V-belt drive vary with the pump application. Minimum data required for an approximate pump, speed and drive motor selection are:

- Slurry flow rate
- Slurry density
- Total discharge head







**Versatile applications**

- Floor sumps in process plants
- Mill scale pumping in steel work
- Pumping of machine tool cuttings
- Wood chips pumping

## Sala VSH and Sala VSM Sump Pumps Different series to meet your needs

Sala VSH and Sala VSM pumps are a combination of the classic Sala VS sump pumps and Orion Series horizontal pump wet ends.

The combination provides customers with a significant advantage as the same wet end parts are used for both horizontal slurry pumps and sump pumps, thus reducing parts inventory and simplifying maintenance. It also enables generating a higher TDH, pump head.

Broad spectrum with the smallest VS pump weighing 125kg and 1,8m tall, while the largest is 6000kg and stands at 5m tall

## Core differentiators

<p>Cantilever design without submerged bearings or shaft seal</p>	<p>Outstanding spillage recovery</p>	<p>Proven for tough floor cleaning applications</p>	<p>Multiple wet end materials</p>
<p>Simple installation</p>	<p>Minimal maintenance</p>	<p>High quality wear parts</p>	<p>Range of impeller and casing options</p>



# Sala VSH and Sala VSM Sump Pumps

## Flexible offering with different type of motor arrangement

Metso Outotec has the best proven sump agitation configurations available in the market, spray holes and suction agitator.

The original VS pump comes with:

- Metal & rubber wet end materials with full interchangeability
- Several different impeller and agitation option

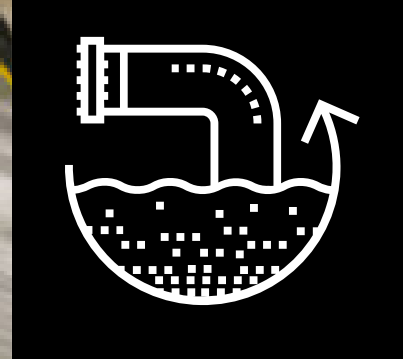
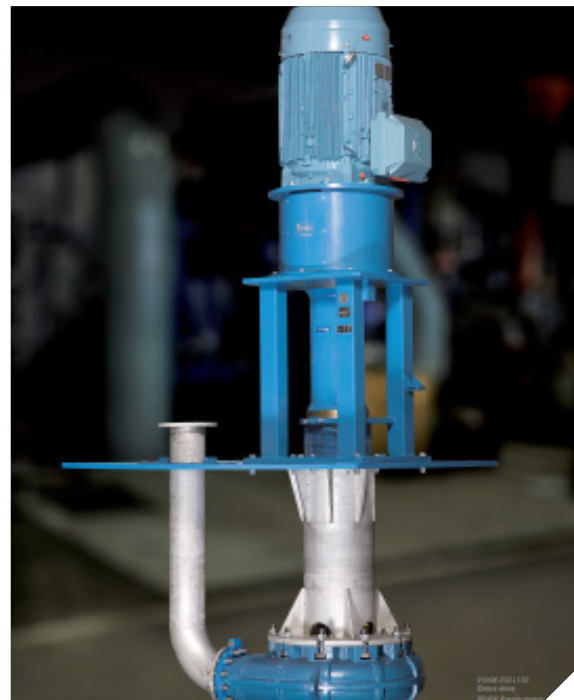
HM High mounted motor  
(motor shaft downwards)



SM Standard mounted motor  
(motor shaft upwards)



DD Direct drive motor  
(motor shaft downwards)



Sala VS vertical sump pumps are used globally for the recovery of spillage and the return of it to the process eliminating any mechanical recovery.

